



ایلامس ذ.م.م
ELAMES W.L.L.

A division of

مجموعه بهزام
BEHZAD GROUP

ABOUT US

One of the original products supplied by Elames over 35 years ago our companies specialise in the supply of sanitary ware to private and commercial developments alike.

With the very best products available from stock and the support from some of the largest companies in the world we are in an ideal position to meet your requirements, however, demanding they may be.

Our long relationship with European suppliers (over 30 years in some cases) and our large showrooms give customers the opportunity to select some of the best products and designs available.

AREAS OF SPECIALTY



Watercloset



Bidet



Wash basin



Basin, bidet, bath & kitchen mixers



Bathroom furniture



Bathing system



Bathroom accessories



Shower system





Water closet

We offer a variety of performance of more than double the industry standards that are engineered and combines unmatched design and technology to meet your particular needs. Whether your needs are based on extraordinary flushing power, touchless flush, knightlight and complete quiet performance with added comfort.

Our Range announces the future of flushing and provide the perfect solution. Select models integrate with Kohler and Gessi suites and ensembles to create a unified look throughout your bathroom.





Bidet

Our bidets offer convenient localized washing to cleanse and refresh. Requiring less than one square meter of space, they are offered with horizontal or vertical spray options. It has been designed to complement one or more styles of watercloset for a unified aesthetic look.





Wash basin

We offer everything you need to create a stylish, functional and efficient bathroom area; whether you're looking for freestanding, wall hung, under counter, vessel or vanity basin and needing an efficient space where you can speed through morning routines or desiring a spacious area where you can sit and pamper yourself.

Our artist edition vanity basin is a one-of-a-kind creation, finished with unique artisanal glazes that produce fascinating surface effects. A hand-carved texture accentuates the glazes' subtle tonal variations.

Image featured Deering basin, inherent beauty and authenticity of handcrafted ceramics. in neutral hues, this basin can be the centerpiece of your bathroom.





Basin, Bidet & Bath Mixer

In the spirit of design artistry and innovation, we offers unique, handcrafted faucets in a wide range of styles, colors and materials to match your individual taste and the décor of your bath. All mixers are constructed with greater strength and durability for years of exceptional performance.





Bathroom furniture

Our bathroom furniture are constructed of superior materials and have an integrated handle set into the drawer front for a sleek look. It allows versatile installations and additional storage. Mirrors feature LED lighting and anti-steam systems.





Bathing system

Whether you're designing a new master suite or remodeling a guest bathroom, we have the right sizes, colours and installations to fit your bathing needs. Choose from signature hydrotherapy options to outfit your bath with the healing benefits of water. With a wide assortment of styles ranging from classic to contemporary and everything in between, you're sure to find your perfect bath.





Bathroom accessories

Real beauty goes beyond looks, and that's what our bathroom accessories are all about. Because more than catering to a width of different styles, they also offer lots of clever functions. Turning the tiniest room in your home into a true stunner.

Our accessories combine perfectly with the 2018 trend colour! Chrome, gold, brass and black in a magnificent composition.





Shower system

Private Wellness® is the largest existing Program of customizable shower systems. A Private Wellness® bathroom redefine the relation between body and water, renewing an experience that goes beyond hygiene to become a ritual of "salus per aquam": a moment celebrating the contact with the inner self.



BRANDS

THE BOLD LOOK OF KOHLER®

Our company's founder, John Michael Kohler, was an Austrian immigrant, a businessman and a visionary. In 1873 he purchased a foundry in rural Wisconsin that produced a variety of cast-iron and steel products. From those humble beginnings, our company has grown into a multifaceted global family of brands that lead the way to enhance our customers' sense of gracious living.

The corporation and each associate have the mission of contributing to a higher level of gracious living for those who are touched by our products and services.

[More info...](#)[Products](#)

GESSI

In the spirit of innovation, and to challenge the conventions Gessi began with a revolutionary idea: to transform a traditional product such as the common faucet into a designer object with sophisticated functions and forms.

Gessi bathroom products enjoy an extraordinary client base of architects, interior designers, and lifestyle enthusiasts... outgoing, creative, dynamic, and innovative individuals, who like to think outside the box inventing the future.

[More info...](#)[Products](#)

Geesa is a market leader in the Netherlands in the professional segment (installers and bathroom specialist shops), as well as an authority in the export to 65 countries. We have reached and maintained this position by consistently focusing on quality, and being involved in and feeling responsible for the environment in which we are working. We try to minimise our ecological footprint on earth and, closer to home, we do everything we can to be an outstanding employer with a loyal and service-oriented attitude towards our partners and purchasers.

Most of our products are made from heavily chrome-plated brass, which ensures that they remain corrosion-resistant for many years. The choice of materials and 12-micron nickel and chromium layer allow for a 12-year warranty.

[More info...](#)[Products](#)

60 YEARS OF DESIGN, 60 YEARS OF DREAMS AND 60 YEARS OF EXPERTISE AND KNOW-HOW

Since 1956, THG Paris has established itself as the brand for high end bathroom fittings and accessories.

Semi-precious stones, crystal, porcelain, onyx, optical glass, natural marble: the brand scrupulously selects top quality materials to create exceptional pieces. THG Paris represents resolutely timeless luxury and art of living.

[More info...](#)[Products](#)



Bobrick is a recognized leader in toilet partition systems and commercial restroom accessories, carrying a strong legacy of product innovation and manufacturing expertise. Whether you're an architect, specifier, distributor or facility manager, Bobrick helps meet the diverse needs of restrooms in all building types. What makes Bobrick, well, Bobrick? A 110-year legacy of commitment to the issues that matter most to architects, building owners, facility managers and distributors. Our Portfolio of Values is the foundation of everything we do, inspiring us in our product development, how we do customer service, and allowing you to easily identify the value built into every washroom solution we offer.

More info...

Products



Created in 1937 by a Paris antique dealer, Crystal et Bronze, located in the medieval village of Château-Landon, manufactures its hand-made bathroom fittings and accessories in the purest traditions of French craftsmanship. Luxury hotels, yachts, private houses...Interior architects and designers from the five continents appeal to the Cristal et Bronze universe, both for the traditional collections as well as for the more contemporary styles.

More info...

Products



With a few products made of wrought iron Smedbo was formed in 1967 in Helsingborg situated in the very south of Sweden. Today the company is the premier manufacturer of quality decorative brass hardware and bathroom accessories to the Scandinavian countries, earning it the distinction of Purveyor to his Majesty the King of Sweden. Smedbo products are available worldwide with distribution centres in Sweden, Germany and in the United States. The worldwide headquarters are located in Helsingborg, Sweden.

More info...

Products



The company and each of its employees have a mission to help improve the quality of life for all those who are attracted by our products and services. This art of good living is marked by design, elegance, charm, quality and generosity of spirit. It is also characterized by self-realization and the enhancement of nature. This mission is reflected in our work, in our team spirit, in each of the products and services we offer our clients, in order to achieve the customer satisfaction objectives that we have set for ourselves. With this in mind, Kohler Co has defined four core competencies that illustrate the values that each employee must convey to their professional environment:

More info...

Products



Since it was founded in 1954, the Company has continuously renewed and improved its products, thus earning itself a position of prestige and credibility in international circuits. The quality and reliability of its products and its ability to supply a rapid and efficient after-sales service are the basis of the success that OLI has constructed by adopting a rigorous and methodical work approach. The excellence of its products is constantly verified by tests that are performed in compliance with the most severe international standards.

More info...

Products



Nicoll Nordic, member of Aliaxis group, is responsible for the Building and Sanitary markets in the Nordic countries. The company was founded 1972 and has a long history, great expertise, good customer service and high product quality. Nicoll Nordic focus on Building and Sanitary applications in residential, warehouse and commercial buildings with a clear strategy backed by strong Aliaxis brands. The systems are manufactured from high-quality plastics and are complete systems. The systems have been designed with particular focus on quality, simple project management and quick installation.

More info...

Products



GROHE is the world's leading provider of sanitary fittings and a global brand, dedicated to providing innovative water products. For many decades, GROHE has been committed to the brand values of technology, quality, design and sustainability that all illustrate GROHE's commitment to creating exceptional experiences and to delivering "Pure Freude an Wasser". With its engineering, innovation and design activities firmly anchored in Germany, GROHE products bear the badge of quality "Made in Germany", ultimately strengthening the customers' confidence in the brand.

More info...

Products

MAJOR PROJECTS



**Diplomat Radisson
Blu Hotel**
Bahrain



Oasis Mall
Juffair, Bahrain



Vox Cinema
The Evenues, Bahrain



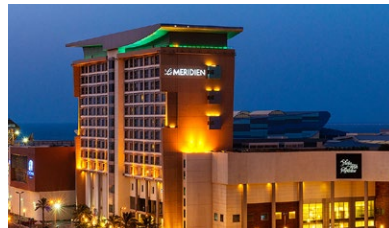
Bahrain Financial Harbour
Manama, Bahrain



Oncology Hospital
Riffa, Bahrain



Salwa Resort Hotel
Seef Area, Bahrain



Le Meridien
Bahrain City Centre



Mawasim Restaurant
Amwaj, Bahrain



Kanoo Tower
Bahrain



Zallaq Police Station
Zallaq, Bahrain



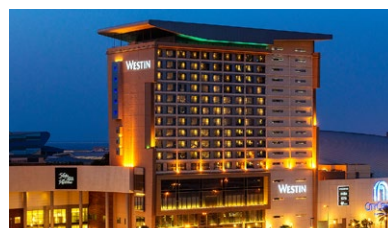
**Al Khamis Mosque &
Visiting Centre**
Riffa, Bahrain



Ewa-Mazaya Plaza
Isa Town, Bahrain



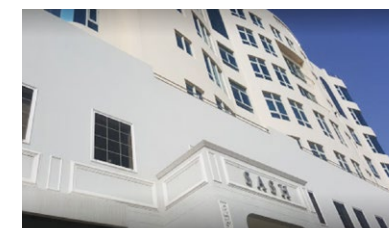
**BDF - Coo82,
3 No 6 Storey**
Riffa, Bahrain



Westin Hotel
Bahrain City Centre



**Bahrain Defence Force
Poly Clinics & Car Park**
Bahrain



Sash Luxury Villa
Riffa, Bahrain



Dilmunia
Hidd, Bahrain



Magic Island
Manama, Bahrain



**Motor City Spare Parts
Warehouse & Accommodation**
Tubli, Bahrain



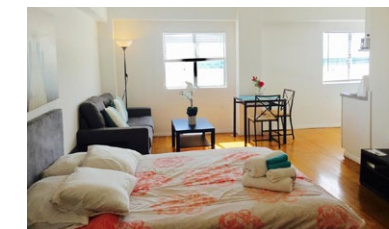
Xerox Office
Hidd, Bahrain



**Sheikh Talal Villa
Clubhouse, Bahrain**



Premier Inn Hotel
Diplomatic Area, Bahrain



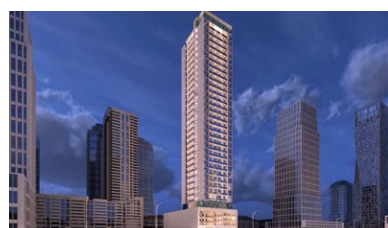
1101- Staff Accommodation



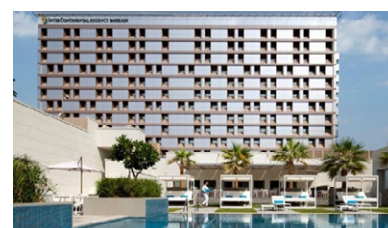
Four Season Hotel
Manama, Bahrain



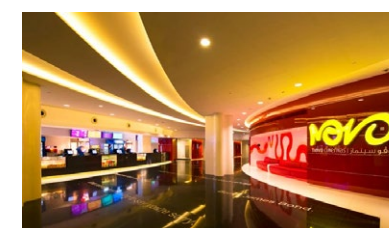
Swiss Bel Hotel
Seef Area, Bahrain



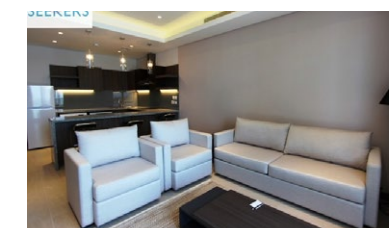
**Memmar Tower
House ME Real Estate**
Bahrain



**Intercontinental Regency
Hotel & Spa**
Manama, Bahrain



**Grand Cinemas
Muharraq Mall**
Muhhaq, Bahrain



Staff Accommodation
Seef Area, Bahrain



ABC Bank Refurbishment
Manama, Bahrain



KINGDOM OF BAHRAIN

ELAMES BSC (c)
P.O Box 26095,
Manama, Kingdom of Bahrain
T : +973 1770 3336,
F : +973 1770 0574
E : sales@behzad-group.com



KINGDOM OF SAUDI ARABIA

BEHZAD TRADING
P.O Box 76226,
Al Khobar-Dammam, Highway, KSA
T : +966 3 858 1605, +966 3 858 1607
F : +966 3 858 1610
E : salsaleh@behzad-group.com



UNITED ARAB EMIRATES

CHATEAU BUILDING MATERIALS
P.O Box 94684
United Arab Emirates
T : +971 2 642 3226
F : +971 2 641 6603
E : chateau@behzad-group.com